

RECORD OWNER

CARL R. BLESIOUS
ROBIN A. BLESIOUS
5 LEXINGTON ROAD
CONCORD, MA

REFERENCE

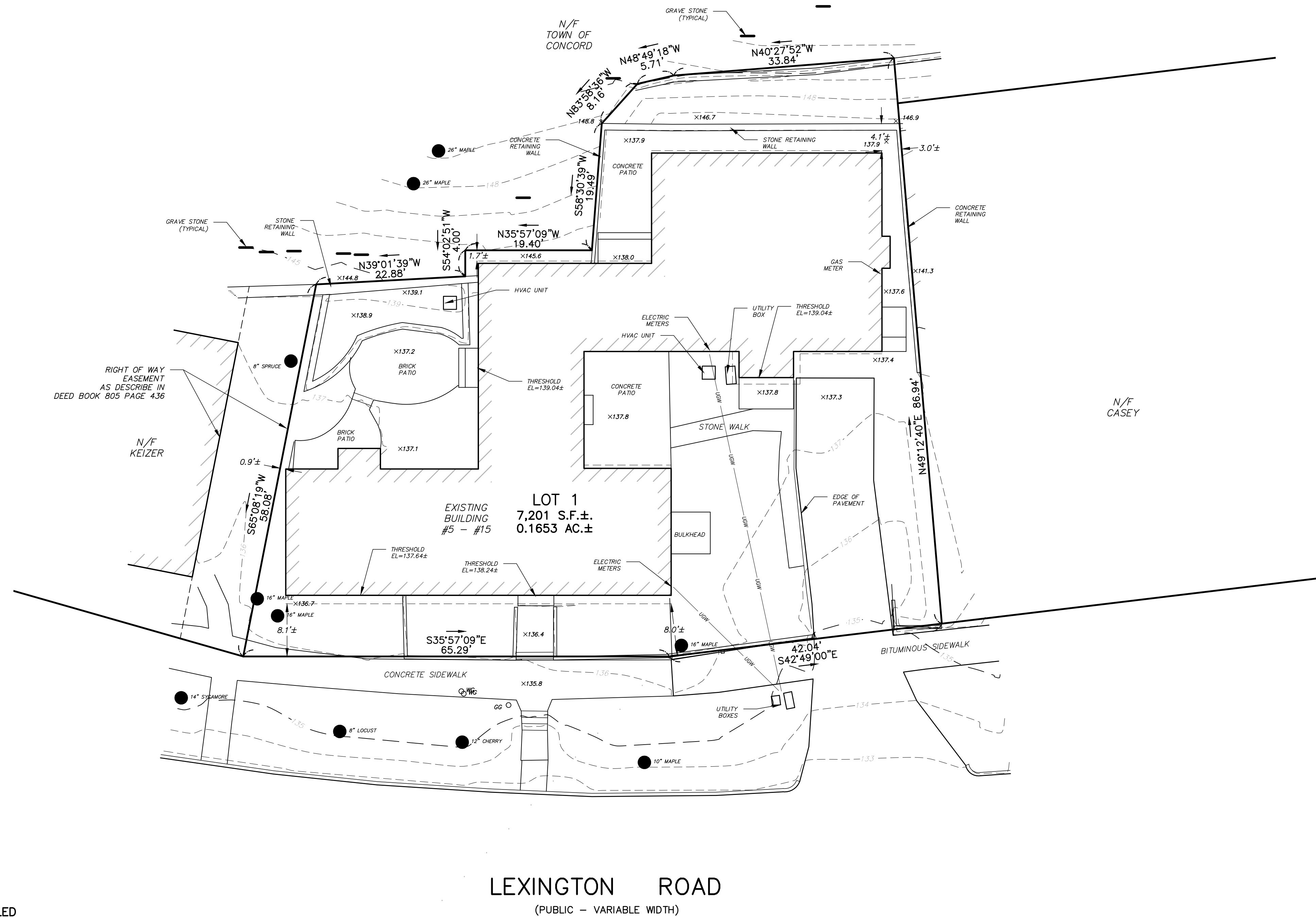
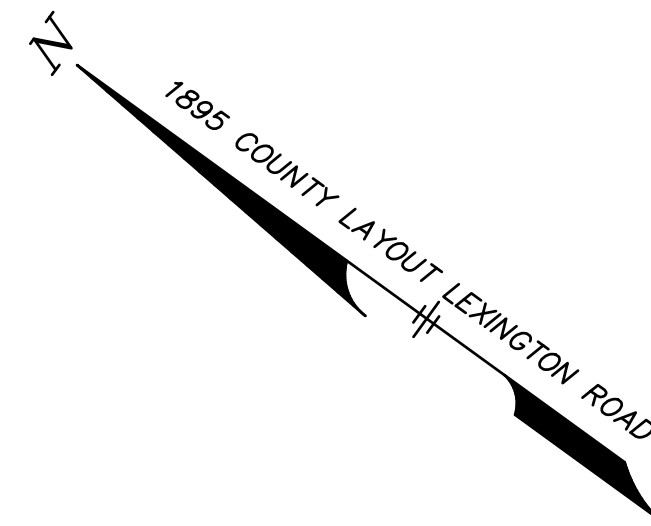
MIDDLESEX REGISTRY OF DEEDS
SOUTH DISTRICT
DEED BOOK 71002 PAGE 531

ZONING DISTRICT

RESIDENCE C
AMERICAN MILE HISTORIC DISTRICT

DATUM

NAVD OF 1983.



LEGEND:

- N/F OVERHEAD WIRES
- TREE
- TREE LINE
- UP UTILITY POLE
- GG+ GAS GATE
- G GAS SERVICE (BURIED)
- WG+ WATER GATE
- W WATER SERVICE (BURIED)
- DMH DRAIN MANHOLE
- D SUB-SURFACE DRAIN LINE
- - - - - EXISTING CONTOUR
- - - - - EXISTING CONTOUR
- ☆ LIGHTPOLE
- △ WETLAND FLAG
- 99X9 SPOT ELEVATION
- ○ ○ ○ ○ STONE WALL
- EDGE OF PAVEMENT

UTILITY NOTE:

ALL UNDERGROUND UTILITIES SHOWN HERE WERE COMPILED ACCORDING TO AVAILABLE RECORD PLANS FROM VARIOUS UTILITY COMPANIES AND PUBLIC AGENCIES AND ARE APPROXIMATE ONLY. ACTUAL LOCATIONS MUST BE DETERMINED IN THE FIELD BEFORE DESIGNING, EXCAVATING, BLASTING, INSTALLING, BACKFILLING, GRADING, PAVEMENT RESTORATION OR REPAIRING. ALL UTILITY COMPANIES, PUBLIC AND PRIVATE, MUST BE CONTACTED INCLUDING THOSE IN CONTROL OF UTILITIES NOT SHOWN ON THIS PLAN. SEE CHAPTER 370, ACTS OF 1963 MASS. WE ASSUME NO RESPONSIBILITY FOR DAMAGES INCURRED AS A RESULT OF UTILITIES OMITTED OR INACCURATELY SHOWN. BEFORE PLANNING FUTURE CONNECTIONS THE APPROPRIATE PUBLIC UTILITY ENGINEERING DEPARTMENT MUST BE CONSULTED. DIG SAFE TELEPHONE No. 1-888-344-7233.

TOPOGRAPHIC
PLAN OF LAND
IN
CONCORD, MASSACHUSETTS
(MIDDLESEX COUNTY)

FOR: BLESIOUS
SCALE: 1"=10' NOVEMBER 20, 2019

STAMSKI AND McNARY, INC.
1000 MAIN STREET ACTON, MASSACHUSETTS
ENGINEERING - PLANNING - SURVEYING

